

Congoleum-Nairn's 1939 Issue of **SEALEX FLOORS AND WALLS**

TRADEMARK REGISTERED

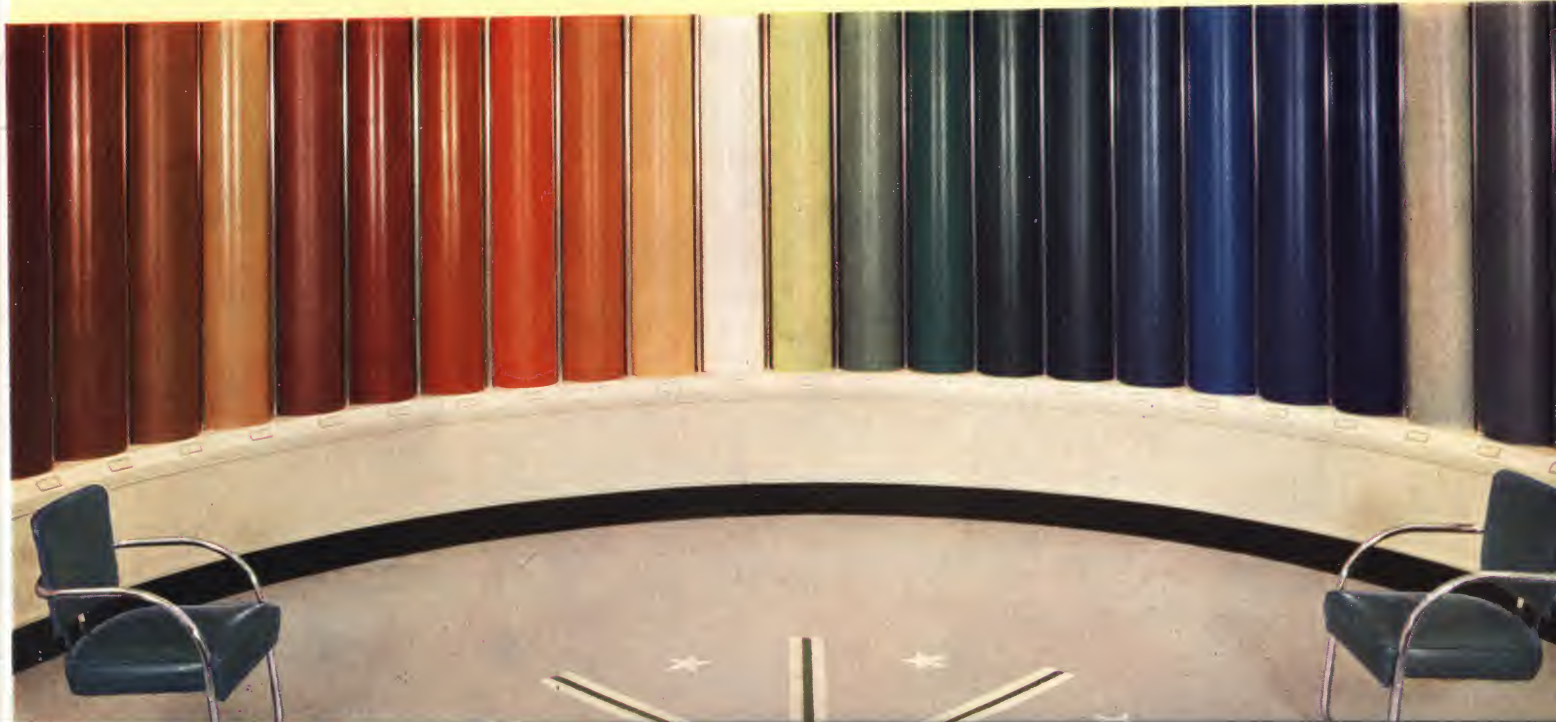


TABLE OF CONTENTS

GENERAL OFFICE
195 Belgrove Drive
Kearny
New Jersey

PRODUCTS	PAGE
SEALEX BATTLESHIP AND PLAIN LINOLEUM	2
SEALEX VELTONE LINOLEUM	2
SEALEX JASPÉ LINOLEUM	2
SEALEX INLAID LINOLEUM	2
ADHESIVE SEALEX LINOLEUM	9
SEALEX TREADLITE LINOLEUM TILE	10
PERSONAL-IZED FLOORS	7
SEALEX WALL LINOLEUM	12

DISTRICT OFFICES

New York	Chicago
Pittsburgh	San Francisco
Philadelphia	Boston
Kansas City	Dallas
Minneapolis	Atlanta

GENERAL INFORMATION, Complete information, specifications and color charts are included in our catalogues "Resilient Floors" (A. I. A. File No. 23i) and "Sealex Wall Linoleum" (A. I. A. File No. 28c). A staff of trained architectural representatives is always ready to consult with you on your specific resilient flooring problems.

SEALEX LINOLEUM

WHAT IT IS

Sealex Linoleum is an exceedingly durable, resilient flooring manufactured to comply in every respect with the exacting requirements of the U. S. Government specification for linoleum. It is made from only the best grades of linseed oil, driers, gums, cork and wood flour, and pigments. These ingredients are combined by the Sealex process into a material of dense yet resilient composition. All minute pores are *sealed*, creating a perfectly smooth, sanitary surface that is stain-proof and easy-to-clean.

WHAT IT COSTS

Its moderate first cost makes Sealex Linoleum a most desirable floor, not only for commercial areas, but also for residential buildings. In modernization work, under-floors may be prepared for the installation of Sealex Linoleum with a minimum amount of time and expense. The only maintenance required is an occasional washing and waxing, which keeps it looking new for years, even under the heaviest foot-traffic. The expense of periodic painting or refinishing of wood floors mounts higher in the long run than the installation cost of Sealex Linoleum.

HOW IT IS INSTALLED

SEALEX LINOLEUM—Without Adhesive Back: Over smooth wood floors, Sealex Linoleum should be cemented over Dry Congo Felt Lining, in 1 lb. weight, or Congo Saturated Felt Lining. Over concrete floors, Sealex Linoleum should be cemented directly to the floor without the use of lining felt.

ADHESIVE SEALEX LINOLEUM: This material is applied in the same manner as Sealex Linoleum without adhesive back, except that no lining felt should be used. No additional paste is required, since the adhesive is factory applied, and can be activated with a bristle brush and water immediately before applying to the underfloor.

SEALEX INSETS: These are installed by using the Inset itself as a template. The workman simply lays the Sealex Inset in the desired location, scribes around it, removes the scored material, then puts the Inset in its place.

SEALEX WALL LINOLEUM: This material should be installed on dry white-coat plaster walls, and cemented in place with Sealex No. 310 Adhesive. Where such backing is not available, installation may be made over gypsum type board materials approved by Congoleum-Nairn Inc.

IMPORTANT: Sealex Linoleum should never be installed on floors of wood or concrete which are in direct contact with the ground, or are below grade unless special precautions are taken to prepare the underfloor. Complete information will be sent upon request. For detailed specifications, see pages 10, 14 and 15.

WHAT KINDS THERE ARE

SEALEX VELTONE LINOLEUM: Unusual beauty in "all-over" decoration makes Sealex Veltone universally acceptable for fine homes as well as for commercial and institutional areas. With their rich blending of colors, Sealex Veltone do not show tracked-in dirt or footprints, making this flooring as practical as it is decorative.

SEALEX INLAID LINOLEUM: Richly veined and colored, Sealex Inlaid offer a distinctive variety of patterns designed to meet the most exacting decorative requirements. The large scale designs are especially favored for public buildings, offices, lobbies and shops. And there is a wide selection of smaller designs, handsome and appropriate for every type of residential interior.

SEALEX BATTLESHIP LINOLEUM: Its outstanding durability makes Sealex Battleship Linoleum ideal for areas where foot-traffic is heaviest. Corridors, Office Working Spaces, School Rooms, Gymnasiums, Stores and Assembly Halls can be permanently covered with Sealex Battleship.

SEALEX PLAIN LINOLEUM: Embodying the same characteristics as Sealex Battleship Linoleum, Plain Linoleum is available in a wide variety of colors, and affords architects the opportunity of designing custom floors for those areas where individual treatment is required.

SEALEX JASPÉ LINOLEUM: Durable enough for the traffic of commercial areas, Sealex Jaspé Linoleum is also sufficiently decorative for residential use.

SEALEX WALL LINOLEUM: Here's the same beautiful, washable material as Sealex Linoleum for floors—perfectly adapted into a permanent wall treatment. This material has been subjected to the practical test of service in the field over a period of several years and its remarkable acceptance places it among the important materials in the decorative field. Stain-proof and crack-proof, it retains its original beauty with no refinishing.

SEALEX "PERSONAL-IZED FLOORS": Designed-to-order floors at practically ready-made cost! Personal-ized Floors are created through the use of Sealex Insets and Sealex Feature Strips and Borders. These Sealex Linoleum Insets are available in a wide variety of sizes, colors, and designs—all color-correlated to blend with the key colors in Sealex Linoleum patterns. When Sealex Insets are installed they become a permanent part of the finished floor.

HOW WE SERVE YOU

We maintain a staff of trained architectural representatives, located throughout the country, who are always at the service of owners, architects, and contractors. These men will be pleased to consult with you at any time on your flooring problems. Write to—Architectural Service Department, Kearny, N. J. No obligation, of course.

SEALEX LINOLEUM

WEIGHT, GAUGE AND COLOR TABLES

SEALEX VELTONE LINOLEUM

(See page 4 for color card)

COLOR	1/8" Gauge 4.76 mm. (.183-.193 inch)	1/2" Heavy Gauge 3.18 mm. (.120-.130 inch)	Medium Gauge 2.40 mm. (.090-1.00 inch)	Standard Gauge 2.00 mm. (.074-.084 inch)
VanDyke Brown	Not made	2901	Not made	Not made
White with Red	Not made	2902	Not made	7202 A7202
Ivory with Blue	Not made	2937	6937	7237 A7237
Light Green	1941	2941	6941	7241 A7241
Taupe	Not made	2951	Not made	Not made
Black and White	1959	2959	6959	7359 A7359
Dark Brown	1968	2968	6968	Not made
Orange & Black	1970	2970	6970	Not made
Dark Green	1972	2972	6972	Not made
Light Gray	1974	2974	6974	Not made
Mahogany Red	1976	2976	6976	7376 A7376
Medium Blue	Not made	2977	6977	7377 A7377
Sienna	1978	2978	6978	Not made
WhitewithBlack	1980	2980	6980	7380 A7380
Medium Brown	Not made	2983	6983	7383 A7383
Monochromatic Blue	Not made	2988	Not made	7388 A7388
Verde Antique	1989	2989	6989	Not made
Neutral mixture	Not made	2994	Not made	7394 A7394

SEALEX PLAIN LINOLEUM

(See page 5 for color card)

Pattern No.	Color	1/8" Gauge 3.18 mm. (.120-.130 inch)	Medium Gauge 2.40 mm. (.095 inch)	Standard Gauge 2.00 mm. (.079 inch)
1100	Craft Brown	} See 1/8" Battle- ship— 1000 series	x	x
1101	Moss Green		x	x
1102	Terra Cotta		x	x
1103	Slate Gray		x	x
1104	Mahogany		x	x
1105	Black		x	x
1110	Yellow		x	x
1113	Ivory White		x	x
1114	Pacific Blue		x	x
1116	Olympic Blue		x	x
1118	Coffee Brown	x	x	
1119	Jade Green	x	x	
1120	Ivy Green	x	x	
1122	Cherry Red	x	x	
1123	Pearl Gray	x	x	
1124	Citron Green	x	x	
1125	Coronation Blue	x	x	
1126	Orange	x	x	
1127	Crimson	x	x	
1128	Emerald Green	x	x	
1129	Coral	x	x	
1130	Pigskin	x	x	
1131	Marine Blue	x	x	

SEALEX INLAID LINOLEUM

(See page 6 for color card)

Sealex Inlaid Linoleum is manufactured in several weights, but only the Heavy Gauge is recommended for "commercial" uses—that is, in stores, public buildings, institutions, etc. Actual thicknesses of the various gauges are as follows:

	Inches	Mm.
Heavy Gauge	.125	3.18
Medium Gauge	.095	2.40
Standard Gauge	.079	2.00

Where decimal inch tolerances are given in these tables they are the upper and lower limits for the respective gauges, as established by U. S. Government standards.

SEALEX BATTLESHIP LINOLEUM

(See page 5 for color card)

Pattern No.	Color	6.00 mm. Gauge 6.00 mm. (.230-.240 inch)	3/16" Gauge 4.76 mm. (.183-.193 inch)	1/8" Gauge 3.18 mm. (.120-.130 inch)
1000	Craft Brown	x	x	x
1001	Moss Green	Not made	x	x
1002	Terra Cotta	Not made	x	x
1003	Slate Gray	Not made	x	x
1004	Mahogany	Not made	x	x
1005	Black	Not made	x	x

SEALEX JASPÉ LINOLEUM

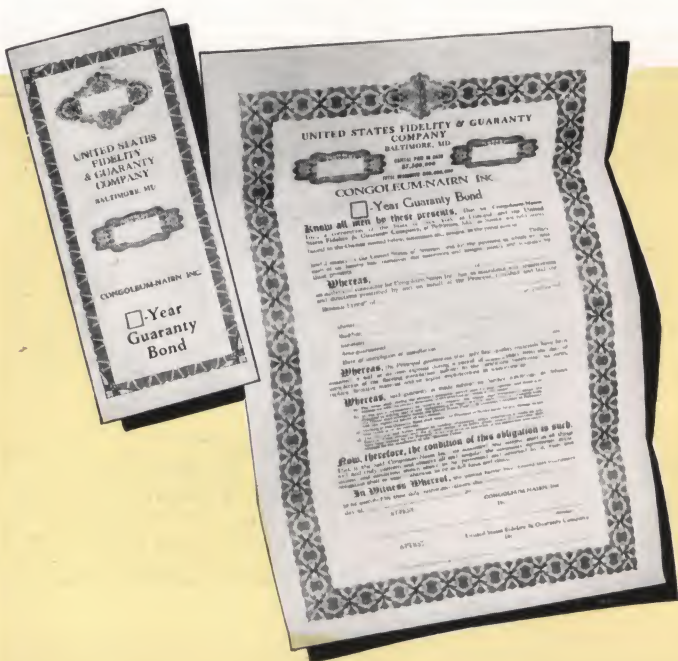
(See page 5 for color card)

Pattern No.	Color	3/16" Gauge 4.76 mm. (.183-.193 inch)	1/8" Gauge 3.18 mm. (.120-.130 inch)	Medium Gauge 2.40 mm. (.095 inch)
1251	Taupe	x	x	x
1252	Dark Gray	x	x	x
1253	Tan	x	x	x
1254	Brown	x	x	x
1255	Light Gray	x	x	x
1256	Dark Green	x	x	x
1258	Rose Glow	Not made	x	x

THE GUARANTY BOND

Bonded Floors and Walls

When Sealex Linoleum or Sealex Wall Linoleum is installed by an authorized contractor of Bonded Floors or Bonded Walls, the full value of workmanship and materials is backed by a Guaranty Bond. What better assurance of complete satisfaction could there be to architect, contractor and client. Certainly, such a guarantee can be offered only by a thoroughly responsible concern . . . one sure of its materials and installation methods.

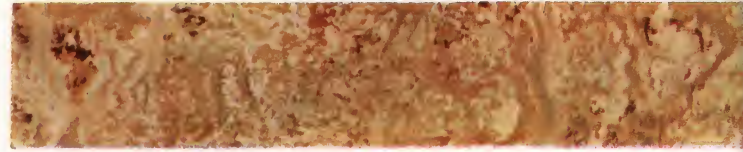


SEALEX VELTONE LINOLEUM

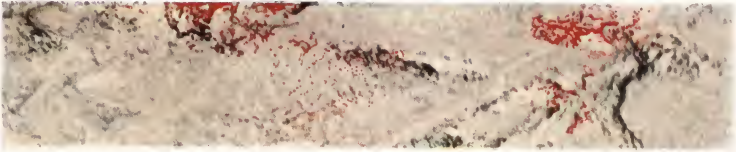
Pattern Numbers Given Are for 1/8" Heavy Gauge



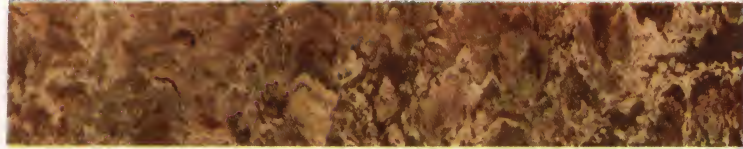
"RUTLAND" No. 2980



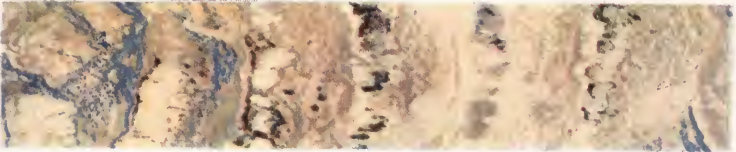
"SIENNA" No. 2978



"SPARTA" No. 2902



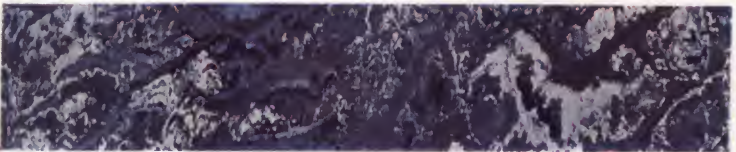
"TANGIER" No. 2983



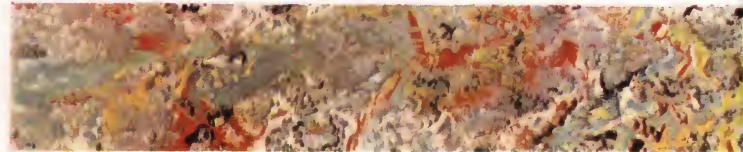
"TRIESTE" No. 2937



"VAN DYKE BROWN" No. 2901



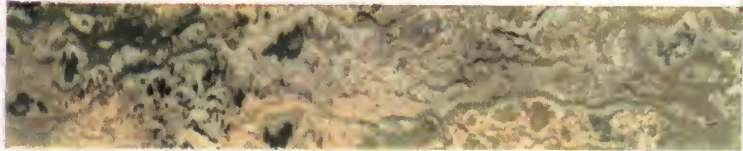
"DELFT BLUE" No. 2977



"KENYON" No. 2994



"NITE" No. 2988



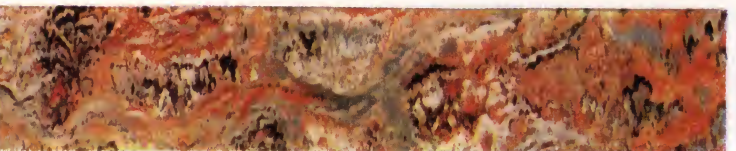
"MARSH GREEN" No. 2941



"SEPIA TAUPE" No. 2951



"EVERGREEN" No. 2972



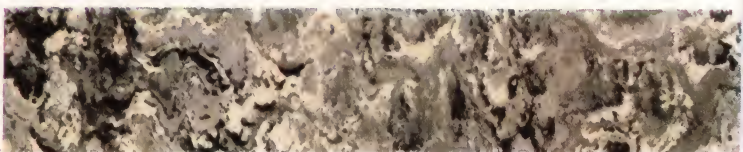
"TIBET" No. 2970



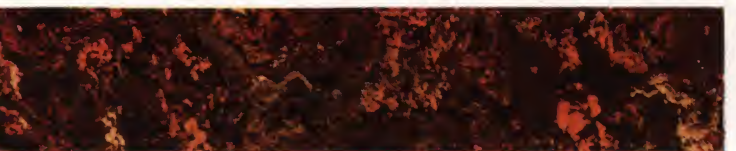
"VERDE ANTIQUE" No. 2989



"CIRCASSIAN" No. 2968



"PAISLEYGRAY" No. 2974



"MAHOGANY RED" No. 2976



"VULCAN" No. 2959

SEALEX JASPE LINOLEUM



"Brown" No. 1254



"Dark Gray" No. 1252



"Tan" No. 1253



"Light Gray" No. 1255



"Taupe" No. 1251



"Dark Green" No. 1256



"Rose Glow" No. 1258

SEALEX BATTLESHIP AND PLAIN LINOLEUM



"Ivory White"
No. 1113



"Yellow"
No. 1110



"Pigskin"
No. 1130



"Craft Brown"
Nos. 1000 and 1100



"Coffee Brown"
No. 1118



"Mahogany"
Nos. 1004 and 1104



"Citron Green"
No. 1124



"Jade Green"
No. 1119



"Emerald Green"
No. 1128



"Ivy Green"
No. 1120



"Moss Green"
Nos. 1001 and 1101



"Olympic Blue"
No. 1116



"Pearl Gray"
No. 1123



"Slate Gray"
Nos. 1003 and 1103



"Black"
Nos. 1005 and 1105



"Coronation Blue"
No. 1125



"Marine Blue"
No. 1131



"Pacific Blue"
No. 1114



"Coral"
No. 1129



"Orange"
No. 1126



"Crimson"
No. 1127



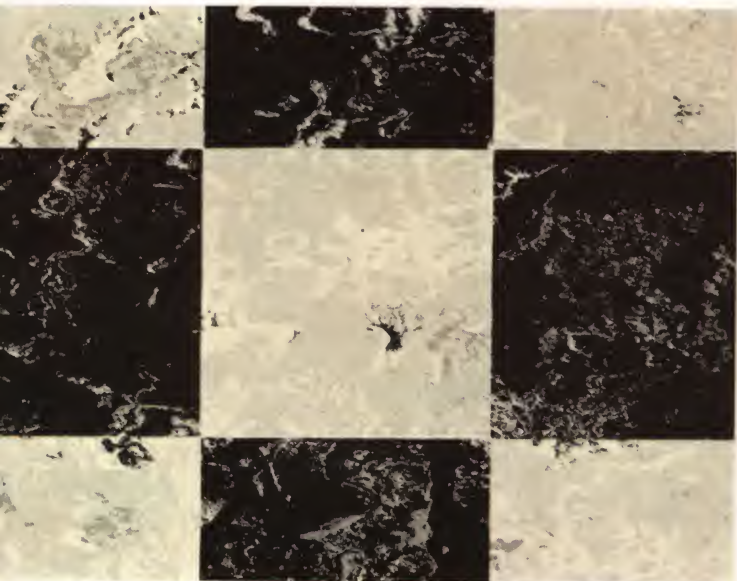
"Cherry Red"
No. 1122



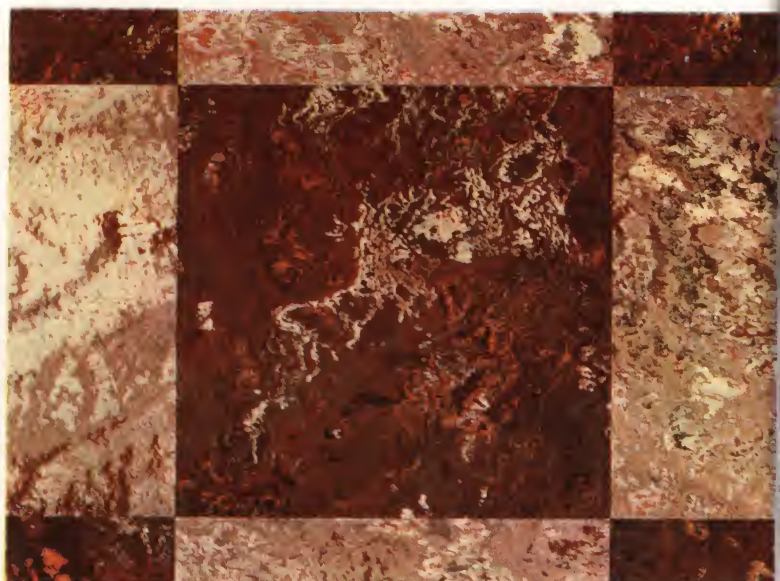
"Terra Cotta"
Nos. 1002 and 1102

SEALEX INLAID LINOLEUM

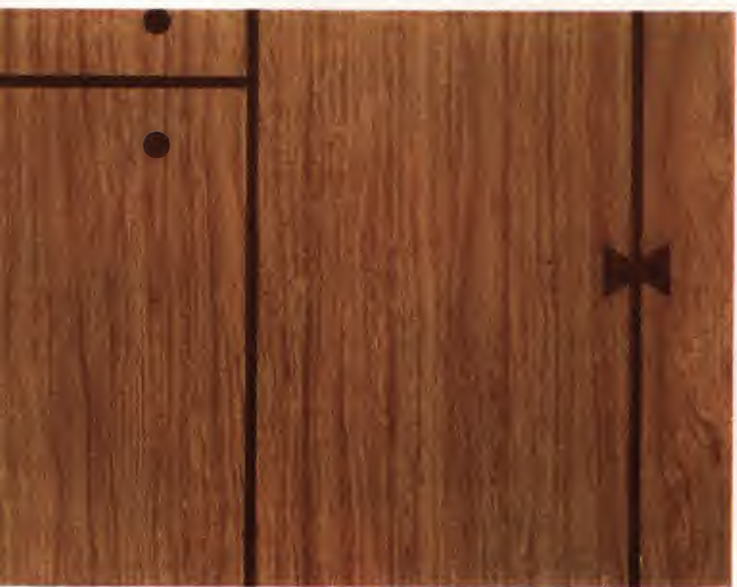
The Resilient Floors Catalogue shows the wide range of designs and colorings available. A copy will be furnished you on request.



"FOYER" No. 3104—Heavy Gauge



"CHATEAU" No. 3256—Heavy Gauge

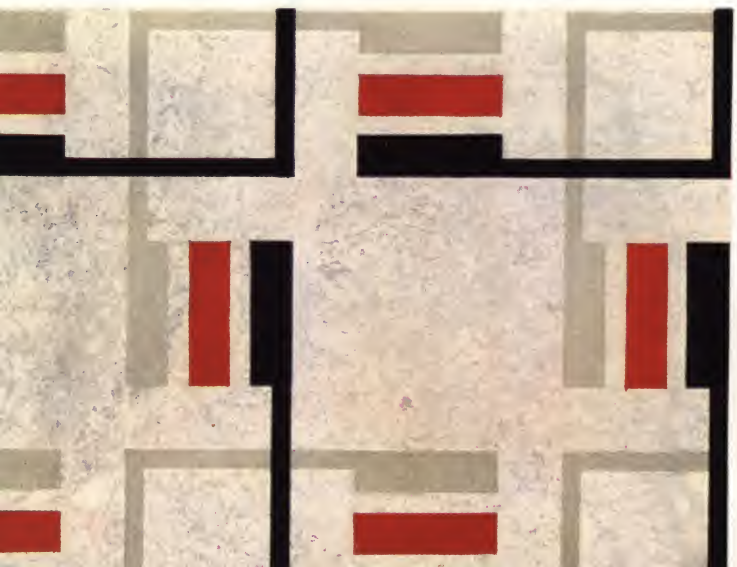


"REVERE" No. 6015—Medium Gauge



"ANSONIA" No. 6070—Medium Gauge

"GREGORY" No. 7523—Standard Gauge



"BRISTOL" No. 7508—Standard Gauge



SEALEX PERSONAL-IZED* FLOORS



"CHERRIES" No. P35



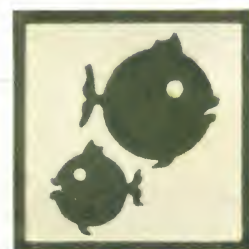
"SCOTTIE DOG" No. P32



"PEASANT FLOWER" No. P37



"STAR IN CIRCLE" No. P38



"BLOW FISH" No. P31



"CORNER KEY" No. P42



This Personal-ized Floor uses Sealex Feature Strips of Crimson and White linoleum to frame amusing figures of athletes, cleverly made from stock Sealex Insets—Leaves, Discs and Squares. The floor is Sealex Veltone, "Nite," Pattern No. 2988. The walls are Sealex Wall Linoleum, No. 7988.

To the architect interested in creating original floor effects, Congoleum-Nairn offers a new and important development — *Personal-ized Floors* of Sealex Linoleum. This innovation has been made possible through the introduction of *pre-fabricated* Sealex Insets, Feature Strips and Borders. When used with Sealex Veltone or Plain Linoleum, these "Personal-izing" units provide almost limitless design possibilities. Here are designed-to-order floors at ready-made cost!

Sealex Insets are available in sizes ranging from 2" to 18" and are made in a variety of 31 different design motifs, a few of which are illustrated

on this page. All Sealex Insets are available in a variety of colors and are *correlated* to blend with the key colors in Sealex Linoleum patterns, thus assuring authentic color unity. When Sealex Insets are installed, they become a permanent part of the finished floor.

Now, with the advent of *Personal-ized Floors*, Congoleum-Nairn places in your hands the first opportunity to design individual, "custom-cut" floors even for those clients with most modest budgets! We will be pleased to furnish your office with complete information concerning these "Personal-izing" units.

*Trademark Registered, U. S. Pat. Off., Congoleum-Nairn Inc.

SMALL SEALEX INSETS



"DISCS" No. P302



"SQUARES" No. P304



"LEAVES" No. P305



"CRESCENTS" No. P303



"CHEVRONS" No. P306



"DIAMONDS" No. P308



"STARS" No. P301



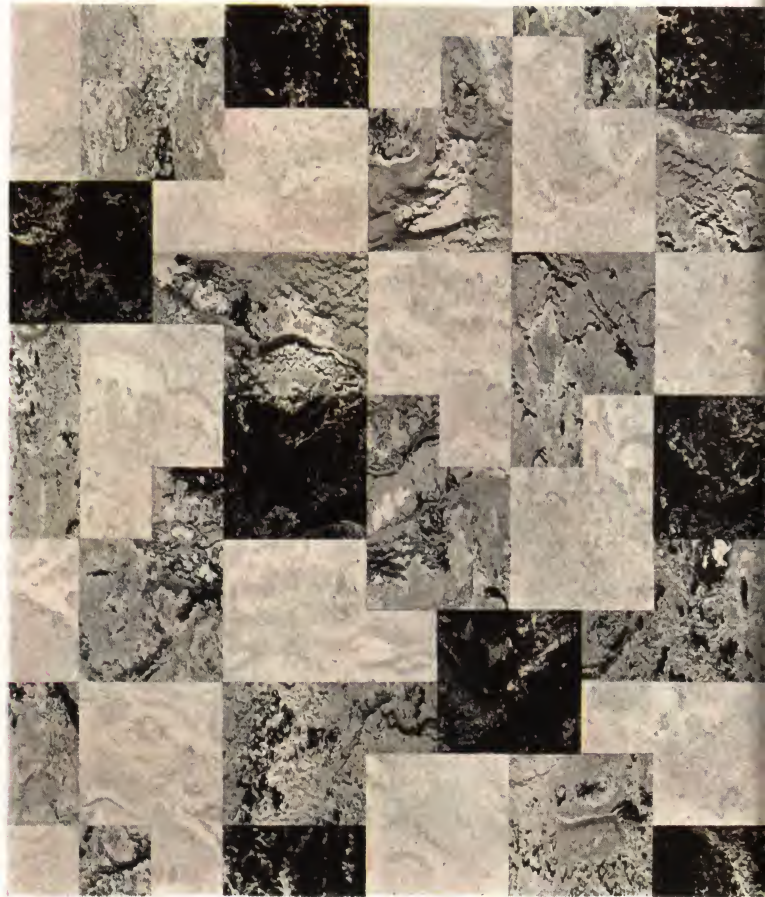
"HEXAGON" No. P307

ADHESIVE SEALEX LINOLEUM

The Resilient Floors Catalogue shows the wide range of designs and colorings available. A copy will be furnished you on request.

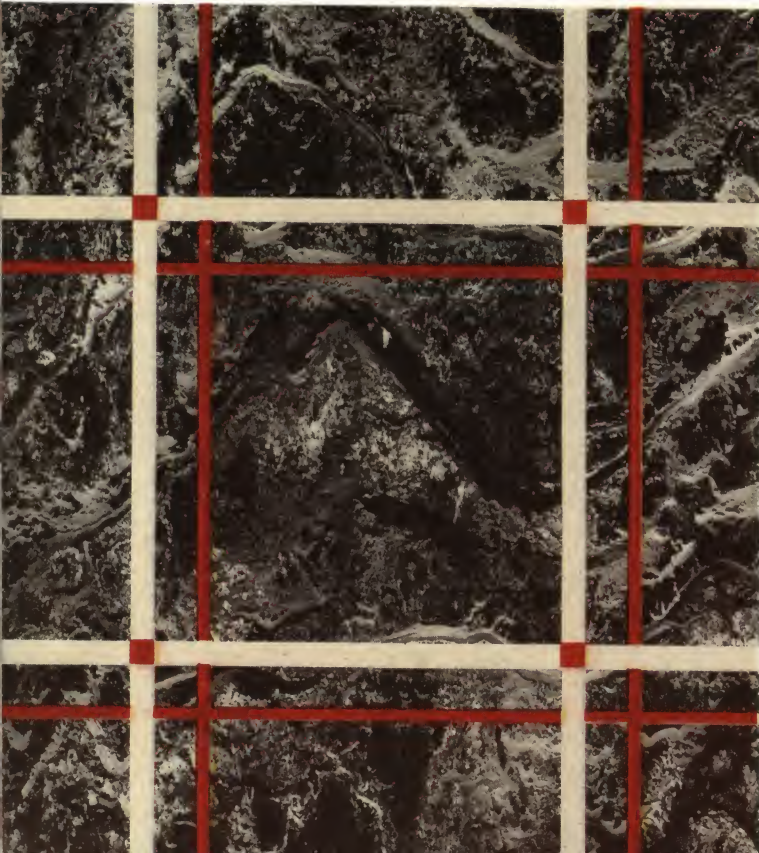


"DUMAS"—Pattern No. A7512—Standard Gauge



"PALERMO"—Pattern No. A7432—Standard Gauge

"BLACKBURN"—Pattern No. A7488—Standard Gauge



"PUEBLA"—Pattern No. A7526—Standard Gauge



ADHESIVE SEALEX LINOLEUM

This modern development in the inlaid linoleum field has a new and specially prepared, factory-applied adhesive on the back. Installed according to the specifications below, every square inch of Adhesive Sealex Linoleum grips the floor like a vise, insuring a permanent job.

Because this revolutionary new floor-covering insures the strongest and most permanent installation, we recommend the application of Adhesive Sealex Linoleum directly to either wood or concrete floors (above grade) without the use of lining felt. It also eliminates the use of messy paste pails and the heavy roller. Much time and expense are thus saved. Remember, however, that regardless of installation method used, no linoleum floor

can be smoother than the underfloor to which it conforms.

Its mechanical advantages are only a part of the interesting story of the new Adhesive Sealex Linoleum. Design and color experts have kept pace by introducing sparkling correlated colors into choice patterns appropriate to this marked advancement in the inlaid linoleum industry.

Architects will be especially pleased with the decorative flexibility, sanitary, easy to clean, time and money saving features which ideally adapt Adhesive Sealex Linoleum to residential construction or re-modeling projects. Sold by dealers in cities and towns throughout the United States, its introduction has increased the use of inlaid linoleum by thousands of satisfied consumers.

SPECIFICATIONS FOR LAYING

The linoleum contractor shall furnish and install the materials hereinafter specified on all sub-floor areas as follows:

1. MATERIALS: (a) *Linoleum:* The Linoleum used to be Congoleum-Nairn Adhesive Sealex Linoleum, Gauge, Pattern No., and must bear the manufacturer's name and grade of the linoleum. The materials shall be subjected to a temperature of not less than 70° F. for at least 24 hours before installation.

2. UNDERFLOORS: Please refer to page 15 for detailed specifications covering the preparation of underfloors, both wood and concrete.

3. APPLICATION OF MATERIALS: On the sub-floor thus prepared, install Adhesive Sealex Linoleum direct to the underfloor. The widths of the linoleum should be laid crosswise to the floor boards. Where this cannot be done, the linoleum should be laid so that the seams do not coincide with cracks in the underfloor. The successive widths should be fitted and applied one at a time until the room is covered.

After each width is cut to fit, half of the width is turned back and the adhesive activated with a soft bristle brush and warm water. Care should be taken to be sure that all of the adhesive is uniformly and completely activated.

The activated half of the width is then turned back into

place on the floor and pressed down all over with foot pressure. The remaining half of the width is then turned back and similarly activated and applied.

Successive widths should be installed so that the pattern matches and slightly overlaps, to permit the proper cutting of seams, using the upper width as a guide for cutting the under width. After the seam is thus cut and trimming removed, the activating and installing process is carried out as with the first width. Proceed with successive widths in the same manner.

4. CLEANING AND CARE OF LINOLEUM: Immediately after completion of installation, clean the surface of the linoleum with a damp cloth, allow floor to dry thoroughly and apply one or two coats of Sealex Self-Polishing Wax.

5. BRIEF SPECIFICATIONS: On all underfloors as indicated on plans and/or as called for in the specifications, apply Adhesive Sealex Linoleum, Gauge, Pattern No., in accordance with the manufacturer's specifications. The use of merchandise known as remnants will not be allowed. The underfloor shall be smooth and free from inequalities, and Adhesive Sealex Linoleum applied in accordance with the manufacturer's approved method of application.



Activating the adhesive.
Read
instructions above.



Trimming the seam.
Read
instructions above.

SEALEX TREADLITE LINOLEUM TILE

DESCRIPTION: Where decorative floors expressing the individuality of the client are desired, plain and marbled Sealex Treadlite Linoleum Tile is a ready answer to the architect's problem.

These tiles are obtainable in eleven plain colors and ten marbled effects. See the following page for color card.

Sealex Treadlite Linoleum Tile offers numerous decorative possibilities through the combination of two or more colors in tiles of various sizes and shapes.

USES: In addition to its decorative features, Sealex Treadlite Linoleum Tile is durable, resilient, easy to clean and economical to maintain. It is, therefore, suitable for use in such areas as:

Corridors	Assembly Halls
Court Rooms	Public Buildings
Aisles	Private Offices
Sales Rooms	Clubs

WEIGHT AND SIZES: Sealex Treadlite Linoleum Tile is manufactured in one weight or thickness, namely $\frac{3}{16}$ in.

It is made in these standard sizes:

4x 4 in.	4x 8 in.	$\frac{1}{4}$ x 4 in.
6x 9 in.	6x12 in.	$\frac{1}{4}$ x 6 in.
9x 9 in.	9x18 in.	$\frac{1}{4}$ x 9 in.
12x12 in.	12x24 in.	$\frac{1}{4}$ x12 in.
18x36 in.	36x36 in.	$\frac{1}{4}$ x36 in.
1x36 in.	$1\frac{1}{2}$ x36 in.	2x36 in.

Special sizes for the assembling of special designs will be quoted upon request.

HOW INSTALLED: Sealex Treadlite Linoleum Tile is installed by authorized contractors of Bonded Floors, in accordance with the manufacturer's specifications. It is adaptable for use over concrete underfloors.

GUARANTY BOND: When installed over concrete by authorized contractors of Bonded Floors, Sealex Treadlite Linoleum Tile carries a Guaranty Bond issued by United States Fidelity & Guaranty Company—guaranteeing workmanship and material for a period of five years.

COMPLETE CATALOGUE:

Congoleum-Nairn Inc. has an architectural catalogue covering the entire subject of Resilient Floors of the cork composition type. If you do not have this in your 23-J-AIA File we will be glad to furnish a copy on request.



Below: A floor of Sealex Treadlite Linoleum Tile which completely harmonizes in design and color with this interior. Decoratively correct, these floors are entirely businesslike in performance. Sealex Treadlite Linoleum Tile is a favorite choice of business organizations which make a selection only after thorough tests to determine how to get the most for their floor-covering dollar.



SEALEX TREADLITE LINOLEUM TILE

SEALEX TREADLITE LINOLEUM TILE is obtainable in these Plain Colors



Colonial Buff
No. 1056



Mahogany Brown
No. 1004



Craft Brown
No. 1000



Ivory White
No. 1057



Moss Green
No. 1001



Pacific Blue
No. 1036



Fawn Gray
No. 1050



Slate Gray
No. 1003



Terra Cotta
No. 1002

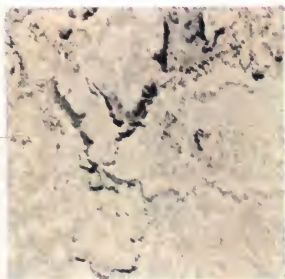


Stone Gray
No. 1015



Black
No. 1005

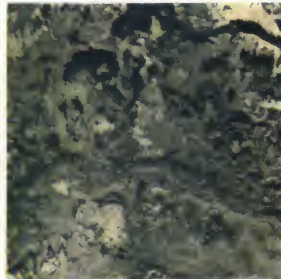
SEALEX TREADLITE LINOLEUM TILE is obtainable in these Marbleized Effects



White Mottled Black
No. 1180



Black Mottled White
No. 1159



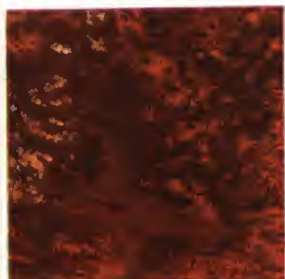
Marshgreen
No. 1141



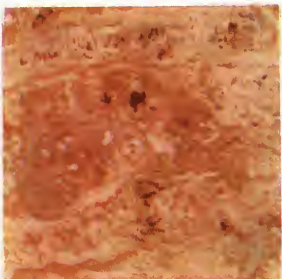
Dark Sienna
No. 1168



Green Mottled Red & Black
No. 1170



Mahogany Red
No. 1176



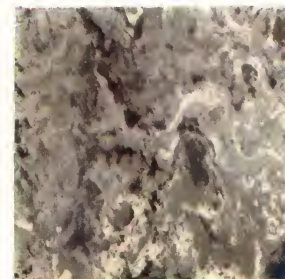
Light Sienna
No. 1178



Verde Antique
No. 1189



Evergreen
No. 1172



Paisleygray
No. 1174

SEALEX WALL LINOLEUM

A Permanent Decorative Material



DESCRIPTION: Sealex Wall Linoleum is the same beautiful, washable, permanent material as Sealex Linoleum for floors—adapted into an ideal wall treatment. This versatile product is processed

in much the same way as Sealex Veltone Linoleum, except that the composition is thinner and the backing is closely woven cotton sheeting. Sealex Wall Linoleum's desirable flexibility and strength enable it to withstand ordinary expansion and contraction with no damage whatsoever. This material will follow curves in the wall and can be bent around columns, pilasters and rounded corners without difficulty.

USES: Quickly cemented into place, Sealex Wall Linoleum is as desirable for modernizing work as it is for new construction. For homes, apartment houses, business buildings or institutions, Sealex Wall Linoleum affords beautiful walls at moderate cost. And there is an appropriate color for every type of room.

MAINTENANCE AND ECONOMY: Sealex Wall Linoleum has a smooth, washable surface that is impervious to dirt. It is water and stain-resistant and its inlaid colors cannot wear off or fade. Sealex Wall Linoleum is a *permanent* building material that requires a minimum of maintenance. No repapering, repainting or refinishing!

GENERAL SPECIFICATIONS

On all walls and ceilings as indicated on the plans and/or as called for in the specifications, supply and install Sealex Wall Linoleum as follows:

MATERIALS: Wall Linoleum—The wall linoleum shall be Congoleum-Nairn's Sealex Wall Linoleum, Pattern No.

ADHESIVE: The adhesive for bonding wall linoleum to underwall shall be Congoleum-Nairn's Sealex Wall Linoleum Adhesive No. 310.

WORKMANSHIP: Installation of Sealex Wall Linoleum shall be performed by an approved Congoleum-Nairn dealer and in accordance with manufacturer's prescribed methods.

TREATMENT OF WALL LINOLEUM AT CORNERS: Interior corners shall be rounded—or—squared; exterior corners shall be rounded—or—squared, as shown on the plans and/or in the specifications.

ALLOWANCE FOR THICKNESS OF WALL LINOLEUM: An allowance of approximately 1/8" for thickness of wall linoleum shall be made at all abutments, such as wall fixtures (especially bathroom equipment), door jambs, window frames, baseboards, etc.

CLEANING: Upon completion of installation, the surface of the wall linoleum shall be thoroughly cleaned with lukewarm water and mild soap.

GENERAL CONDITIONS: No Sealex Wall Linoleum shall be applied in a room where the temperature is under 70 degrees F. Sealex Wall Linoleum will not be applied to walls the exterior face of which is in contact with the ground, unless such walls shall have been membrane-water-proofed and furred out and shall test dry in accordance with specifications of the manufacturer of the wall-covering.

BRIEF SPECIFICATIONS: On all plaster walls as indicated on plans and/or as called for in specifications, apply Sealex Wall Linoleum Pattern No. The wall linoleum shall be installed in accordance with the manufacturer's specifications.

(For detailed specifications see page 14.)



Sealex Linoleum on both floors and walls makes this kitchen at once modern and practical. The walls are Sealex Wall Linoleum, "Marble White," No. 7977. Baseboard is "Black," No. 1105. Field pattern of Personal-ized Floor is "Corinth," No. A7231. Sealex "Disc" and "Leaf" Insets and ready-cut Feature Strips in accenting correlated colors. Drainboards are covered with "Orange" Sealex Linoleum, No. 1126.

SEALEX WALL LINOLEUM



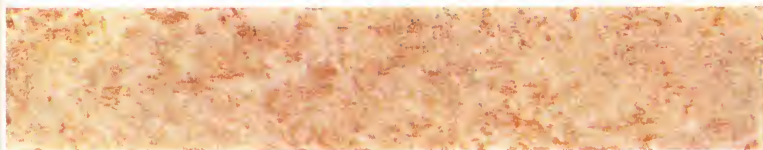
"Parchment"—No. 7973



"Sardonyx"—No. 7963



"Maize"—No. 7987



"Carnelian"—No. 7958



"Coral"—No. 7975



"Rose Agate"—No. 7989



"Green Onyx"—No. 7985



"Black Onyx"—No. 7959



"Light Pine"—No. 7981



"Marble White"—No. 7977



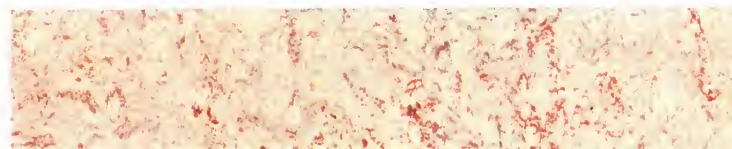
"Cerulean"—No. 7993



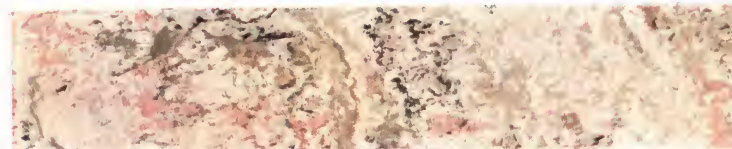
"Tourmaline"—No. 7994



"Green Beryl"—No. 7971



"Tarian Red"—No. 7992



"Sunstone"—No. 7960



"Zircon"—No. 7972



"Azure"—No. 7988



"American Walnut"—No. 7982

SPECIFICATIONS . . . SEALEX WALL LINOLEUM

NEW WALLS

PLASTER—Erection of Walls: Walls and ceilings to receive Sealex Wall Linoleum as indicated on the plans and/or as called for in the specifications, shall be of good quality plaster with white coat finish, erected in such manner that when dry they shall be firm, hard and smooth.

Rough spots and trowel marks shall be sanded smooth with coarse sandpaper. Cracks or indentations shall be filled with Savogran Type A Cement, or equal, sanded to a smooth surface when dry.

Interior corners shall be (square, brought to a true plumb—or—rounded to a radius of $\frac{5}{8}$ "). Exterior corners shall be (square, brought to a true plumb—or—rounded to a radius of $\frac{5}{8}$ "). Explanatory note—in the case of interior corners it is not necessary to erect rounded plaster corners as the wall-covering itself will form the desired cove; provision for rounded exterior corners must be made in the plaster.

Before the application of Sealex Wall Linoleum, plaster walls shall test dry in accordance with Congoleum-Nairn's specifications for testing for moisture. Where called for, walls shall be primed with Sealex Wall Primer as specified by Congoleum-Nairn Inc. Testing of walls for dryness and the priming, if any, are to be performed by the wall linoleum contractor.

Brown coat and special patent plasters: If cement is added to the brown coat mix and if the surface is steel troweled to a smooth finish, the brown coat may be used as an under-wall for Sealex Wall Linoleum. Patent plasters properly troweled are also suitable.

OLD WALLS

PREPARATION OF WALLS: Loose scaly paint, cold water paint or wall paper shall be removed. All grease and dirt shall be removed by washing with a washing soda or Oakite; rinse thoroughly with clear water and wipe dry.

Gloss-painted or enamel-painted surfaces shall be sanded with coarse sandpaper to afford satisfactory bond.

Broken plaster, holes, cracks or other small openings shall be patched with a non-shrinking plaster compound. Such patched areas shall be sanded to a smooth surface.

SHOWER STALLS

In standing shower stalls, the walls and ceilings, to receive Sealex Wall Linoleum as indicated on the plans or as called for in the specifications, shall be of Keene's Cement Waterproof Plaster or approved equal, erected to a true plane, free of any surface projections or indentations. Inside corners shall be sharp and plumb. Exterior corners of entrance jams shall be rounded, using a $\frac{3}{4}$ " radius metal corner. Soap receptacles, grab rails, etc., of the flush built-in type shall extend $\frac{1}{8}$ " from face of the cement finish.

At the junction of plaster walls with recessed tubs, the plaster should be primed with Sealex Wall Primer above the tub for a distance of not less than 4".

GYPSUM WALL BOARD WALLS

Walls and ceilings, to receive Sealex Wall Linoleum as indicated on the plans or as called for in the specification, shall be of $\frac{1}{2}$ " recessed edge type Gypsum Wall Board utilizing a non-metallic tape and cement flush-joint system. Caution—do not use a loosely woven fabric tape.

FRAMING: Framing shall be in accordance with the manufacturer's specification. Special attention shall be given in properly lining up all studs and joists to provide a plane smooth surface. Supplementary 2" x 4" headers shall be provided on ceilings and walls to receive all horizontal joints. Proper grounds shall be provided where bathroom fixtures are to be installed.

For old plaster walls and ceiling, refer to the manufacturer's specification.

APPLICATION OF GYPSUM WALL BOARD: Gypsum Wall Boards shall be applied and nailed in accordance with the manufacturer's specification. Nails shall be cement coated 4d-1 $\frac{3}{8}$ ". All recessed edges shall be face out and all boards applied at right angles to the studs and joists. Panels shall be in one piece as far as possible.

Around recessed bathtubs, the joint between the tub and the boards shall be left open $\frac{1}{4}$ ". This joint shall be grouted in by the linoleum contractor with a water resistant non-shrinking plastic compound.

JOINT TREATMENT: A non-metallic tape and cement flush-joint system shall be applied in accordance with the manufacturer's specification. Make certain that the center of the tape is placed exactly over the joint. Two applications of cement and two sanding operations shall be employed to provide a surface perfectly smooth and flush with the face of the boards.

Fill all cut end joints and other openings and spot all nail heads with cement. When dry, sand lightly to a perfectly smooth surface flush with the boards. Repeat this application.

APPROVAL OF GYPSUM WALL BOARD: All Gypsum Wall Board walls and ceilings to receive Sealex Wall Linoleum shall be subject to the approval of the Wall Linoleum contractor and shall be thoroughly primed with one coat of Sealex Wall Primer, except around tubs where two coats shall be applied.

RESPONSIBILITY: Neither Congoleum-Nairn nor the Sealex Wall Linoleum contractor will accept any responsibility for the proper erection of the Gypsum Wall Board walls and ceilings that are to receive Sealex Wall Linoleum. Any defects appearing at a later date resulting from improper nailing, movement of the boards and improper joint treatment, shall be the responsibility of others.

GUARANTEE

GUARANTY BOND: A Guaranty Bond covering both workmanship and material for a term of one year is obtainable on Sealex Wall Linoleum when installed by a Bonded Walls Distributor.

Please refer to A. I. A. File No. 28-c for samples of the complete line of Sealex Wall Linoleum. If your files do not include this sample folder, please write to: Contract Department, Congoleum-Nairn Inc., Kearny, New Jersey.

SPECIFICATIONS . . . SEALEX LINOLEUM

The linoleum contractor shall furnish and install the materials hereinafter specified on all subfloor areas as follows:

MATERIALS: *Linoleum:* The linoleum used to be Sealex Linoleum, thickness, Pattern No., and shall be delivered on the job in full rolls, and shall conform to Federal Specifications LLL-L-351 or LLL-L-361. Every roll must be marked with the maker's name and grade of the linoleum. This material shall be subjected to a continuous temperature of 70° F. for at least 24 hours before installation.

Lining Felt: (To be used over wood underfloors only.) The felt shall be Congo Felt Lining, either unsaturated or asphalt saturated. The unsaturated lining felt shall weigh approximately one pound per square yard. The saturated felt shall have a minimum weight of approximately one and one-half pounds per square yard.

Adhesive: The adhesive for cementing the lining felt to the wood floor as well as the linoleum to the lining felt shall be Sealex Green Label Paste as manufactured by Congoleum-Nairn Inc., and this same adhesive shall be used for cementing the linoleum directly to the concrete underfloor and applied in accordance with manufacturer's instructions.

(A) WOOD UNDERFLOORS

UNDERFLOOR CONDITION: The underfloor must be smooth and even. The wood floor (if new) shall be furnished and installed by another contractor. The wood floor shall be a double floor, brought up to a surface below the finished floor level. The lower boards of this double floor shall be thoroughly face nailed to the joists and laid diagonally over them. The top boards shall be thoroughly dry and well-seasoned tongue and groove lumber not more than 4" wide (3¼" face), laid at right angles to the floor joists and toe-nailed with eight-penny steel-cut nails on 18" centers.

On old wood floors, loose, defective or badly worn boards shall be replaced and face-nailed. On old or new floors any unevenness at butts or joints shall be scraped or planed smooth and even. Where it is necessary to smooth the underfloor by the sanding method, the wood floor shall be sealed after sanding with a thin coat of shellac.

No linoleum is to be laid under this specification over any wood floor which is below grade, directly in contact with the ground, or over an unexcavated area unless proper ventilation is provided between the underfloor and the ground.

APPLICATION OF MATERIALS: On the wood floor thus prepared, there shall be installed Congo Felt Lining either saturated or unsaturated, which shall be securely cemented to the floor with Sealex Green Label Paste. The felt is to be laid with carefully butted joints—all cross joints to be staggered. The felt shall be carefully cut to fit around all vertical surfaces. The felt shall be thoroughly rolled into the adhesive with a linoleum roller weighing 150 pounds.

Over the felt lining thus installed, Sealex Linoleum shall be applied. It shall be cut to fit the room accurately and neatly and shall be laid so as to have the fewest possible seams and in a manner to assure pattern match at longitudinal and cross seams. The linoleum shall be laid at right angles to the floor boards and care should be taken to avoid having the seams of the linoleum fall directly over the seams of the felt.

At junctions with vertical surfaces, the linoleum shall be carefully scribed so as to form a tight joint at these points. Allowance shall be made for ½ to ¾ inch lap at all seams for double cutting (see note below for pattern goods).

The linoleum shall then be cemented all over to the felt, using Sealex Green Label Paste and shall be rolled immediately from the center of the sheet out with a roller, weighing 150 pounds, to obtain complete adhesion and to remove all air bubbles.

SEAMS: After the linoleum has thus been cemented to the floor with the seams properly lapped, the seams shall be cut through the two thicknesses and the edges of the linoleum shall then be embedded into the adhesive and thoroughly rolled to obtain a tight, even, workmanlike seam.

All seams and edges shall be thoroughly weighted down with sand bags to aid proper adhesion.

Where cross seams in linoleum are necessary, the linoleum should be cemented to the floor allowing approximately six inches lap where the seam is to be made. After the cemented area has been thoroughly rolled, the linoleum should be left in this lapped condition for at least one hour to permit any shrinkage that might occur. Paste should then be applied to the floor under the lap and the linoleum cut through both thicknesses using a straight edge as a guide. During this operation, excessive bending of the linoleum should be avoided.

Note: Specifications for cutting seams where pattern goods are to be installed. The seams shall be only slightly lapped (not more than ⅜ inch). The edge of the upper sheet shall be used as a guide for cutting the lower sheet in order to secure a tight and slightly seam. This method of applying pattern goods must be followed to avoid distorting the pattern.

CLEANING OF LINOLEUM: The linoleum contractor shall remove all paste spots with a damp cloth, leaving the linoleum floor broom clean and in good condition.

PROTECTION: After the linoleum floors have been inspected and approved, the general contractor shall cover the linoleum with heavy paper in rooms where painting or other work is to be done as a protection until the building is ready for occupancy.

LIGHTING, HEATING, HOISTING AND POWER: Without cost to the linoleum contractor the owner or general contractor shall maintain a temperature of at least 70° F. during the time the linoleum work is being done. He shall light the rooms sufficiently for efficient work; he shall furnish hoisting service; he shall furnish the necessary power to clean and polish the floor.

GUARANTEE: The linoleum contractor shall guarantee the floor against all defects in material and workmanship for years from date of the completion of the job.

(B) CONCRETE UNDERFLOORS

UNDERFLOOR CONDITION: The concrete floor shall be furnished to the linoleum contractor broom-clean and satisfactorily dry. The surface shall be a smooth, even, troweled-cement finish.

Standard Construction: On standard construction the concrete slab shall have a cement topping not less than 1½" thick and a mix no leaner than one-part Portland Cement and three-parts clean screened sand. Expansion joints which are cut through the top layer of the cement shall be retroweled, furnishing an even top surface.

Monolithic Construction: On monolithic construction the concrete floor slab shall be troweled to a smooth side-walk finish, free from high and low spots.

On concrete floors where expansion joints have not been retroweled, they shall be filled in by the linoleum contractor with non-shrinking plastic material such as Savogran. Floorstone or equal, so that such joints will not show through the surface of the linoleum.

Installation of linoleum shall not proceed until tests have been made to assure that the floors are satisfactorily dry. These tests shall be conducted preferably with a Congoleum-Nairn Inc., concrete moisture content detector. No linoleum shall be laid under this specification over concrete which is below or on grade, or directly over the ground (unless ventilation is provided between the underfloor and the ground).

APPLICATION OF MATERIALS: On the concrete floor thus prepared, Sealex Linoleum shall be applied. It shall be cut to fit the room accurately and neatly and shall be laid so as to have the fewest possible seams and in a manner to assure pattern match at longitudinal and cross seams. At junctions with vertical surfaces, the linoleum shall be carefully scribed so as to form a tight joint at these points. Allowances shall be made for from ½ inch to ¾ inch lap at all seams for double cutting (see note below for pattern goods). The linoleum shall then be cemented all over directly to the concrete floor using Sealex Green Label Paste, and shall be rolled immediately from the center of the sheet out, with a roller, weighing 150 pounds, to obtain complete adhesion and to remove all air bubbles.

Digitized by:



ASSOCIATION
FOR
PRESERVATION
TECHNOLOGY,
INTERNATIONAL
www.apti.org

BUILDING
TECHNOLOGY
HERITAGE
LIBRARY

<https://archive.org/details/buildingtechnologyheritagelibrary>

From the collection of:
Robert Vail Cole Jr, AIA
1962 - 2011

The Nation's finest buildings require

THE NATION'S FINEST FLOORS



Department of Justice Building



Dept. of Agriculture—Main and Extensible Buildings



Library of Congress



The Archives Building



Apex Building

IN the five beautiful Government buildings on this page, over 3,000,000 square feet of Sealex Linoleum will give permanent flooring satisfaction.

Sealex Linoleum rates "No. 1" for this type of installation on many counts. It is beautiful and dignified . . . quiet and comfortable underfoot. Yet Sealex Floors are moderate in first cost, remarkably easy to clean, and never need refinishing throughout their long life!

Installed by authorized contractors, Sealex Linoleum carries a guaranty bond fully covering the value of workmanship and materials. Let us send you complete information for your A.I.A. files.

CONGOLEUM-NAIRN INC., KEARNY, NEW JERSEY

SEALEX LINOLEUM Floors and Walls

TRADEMARK REGISTERED